



6t TELESCOPIC SPREADER BEAM

Maxirig

QUALITY LIFTING SOLUTIONS



MAXIRIG PRODUCT CODE
TSB1063

DESCRIPTION

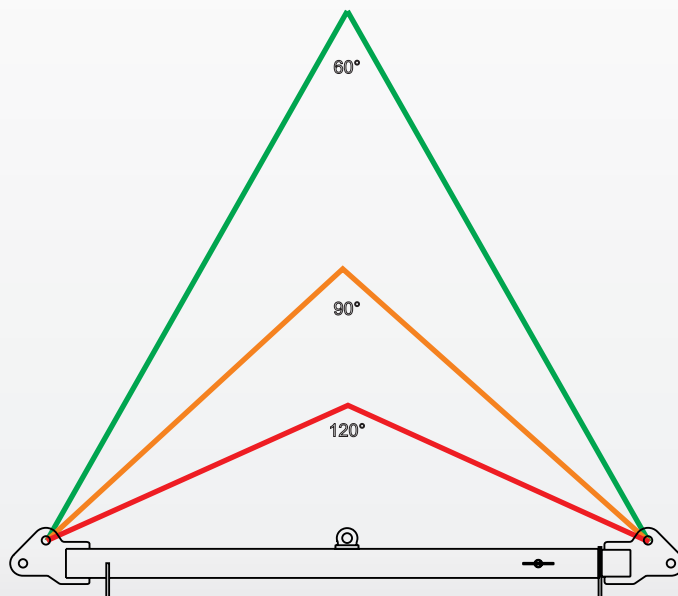
Tare Weight:	50kg (excluding shackles or associated rigging gear)
Lifting Lugs (top) suit:	4.7 tonne Grade 'S' safety bow shackle
Load Lugs (lower) suit:	4.7 tonne Grade 'S' safety bow shackle
Centre Lug suit:	Self lift only

PRODUCT ASSURANCE

Parent Standard:	AS4991
Proof Load Testing	Yes
MPI Weld Inspection	Yes
Manufacturer's Guarantee	1 Year

LOAD CHART

Span (Metres)	WLL (tonnes)				Approx Sling Leg Length (Mtrs)			Approx Headroom (Mtrs)		
	60°	90°	120°	CENTRE LIFT	60°	90°	120°	60°	90°	120°
2.0	6.0	3.5	2.0	NA	2.0	1.4	1.1	1.7	1.0	0.6
2.2	6.0	3.5	2.0	NA	2.2	1.6	1.3	1.9	1.1	0.6
2.4	6.0	3.5	2.0	NA	2.4	1.7	1.4	2.1	1.2	0.7
2.6	6.0	3.5	2.0	NA	2.6	1.8	1.5	2.3	1.3	0.8
2.8	6.0	3.5	2.0	NA	2.8	2.0	1.6	2.4	1.4	0.8
3.0	6.0	3.5	2.0	NA	3.0	2.1	1.7	2.6	1.5	0.9



WE PROVIDE SUPERIOR QUALITY LIFTING PRODUCTS AUSTRALIA WIDE

All Maxirig products are designed and manufactured in Australia by our highly skilled team of engineers and boilermakers.



VISIT WWW.MAXIRIG.COM.AU