

CALL 8360 8910



DYNAMIC RIGGING HIRE

Australia's best range of quality heavy rigging gear

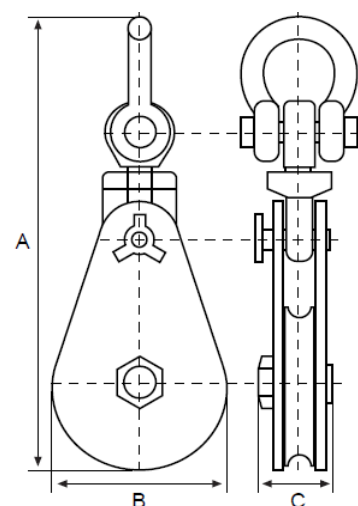
Snatch blocks

Available for hire is a wide range of snatch blocks all with the correct 1970 or 1770 grade 6 x 36 wire slings to suit, we stock multiples of all sizes and can cater for multi point pre-cast concrete construction lifts.

Wire slings to suit our 8 tonne blocks all feature swivel safety hooks specifically for sites that have multiple panels to be lifted as the safety hooks allow quick connection of lifting clutches without the need for shackles.

All snatch blocks are supplied with a captive shackle and have a swivel fitting.

WLL	Sheave \emptyset	Wire \emptyset mm	A mm	B mm	C mm	Unit weight kg
2,000LG	75	8 - 10	290	83	75	4
8,000KG	200	16 - 18	530	210	95	19
15,000KG	300	24 - 26	890	310	135	65
22,000KG	355	26 - 30	960	365	140	90
30,000KG	500	32 - 35	1230	520	155	210
50,000KG	600	44 - 52	1585	630	210	400



 **DYNAMIC RIGGING HIRE**

Fact7/151 Dohertys Road Laverton North Vic 3026

www.dynamicrigging.com.au

sales@dynamicrigging.com.au

03 8360 8910