

6t

TELESCOPIC SPREADER BEAM LONG SERIES

Maxirig

QUALITY LIFTING SOLUTIONS



MAXIRIG PRODUCT CODE
TSB1065

DESCRIPTION

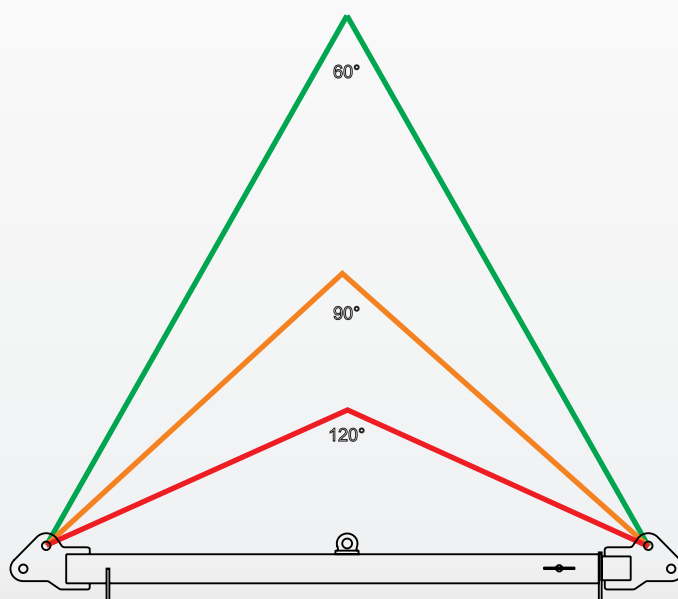
Tare Weight:	105kg (excluding shackles or associated rigging gear)
Lifting Lugs (top) suit:	4.7 tonne Grade 'S' safety bow shackle
Load Lugs (lower) suit:	4.7 tonne Grade 'S' safety bow shackle
Centre Lug suit:	Self lift only

PRODUCT ASSURANCE

Parent Standard:	AS4991
Proof Load Testing	Yes
MPI Weld Inspection	Yes
Manufacturer's Guarantee	1 Year

LOAD CHART

Span (Metres)	WLL (tonnes)				Approx Sling Leg Length (Mtrs)			Approx Headroom (Mtrs)		
	60°	90°	120°	CENTRE LIFT	60°	90°	120°	60°	90°	120°
3.0	6.0	6.0	4.5	NA	3.0	2.1	1.7	2.6	1.5	0.9
3.5	6.0	6.0	4.5	NA	3.5	2.5	2.0	3.0	1.8	1.0
4.0	6.0	6.0	4.5	NA	4.0	2.8	2.3	3.5	2.0	1.2
4.5	6.0	6.0	4.5	NA	4.5	3.2	2.6	3.9	2.3	1.3
5.0	6.0	6.0	4.5	NA	5.0	3.5	2.9	4.3	2.5	1.4



WE PROVIDE SUPERIOR QUALITY
LIFTING PRODUCTS AUSTRALIA WIDE

All Maxirig products are designed and manufactured in Australia by our highly skilled team of engineers and boilermakers.



DYNAMIC RIGGING HIRE

VISIT WWW.MAXIRIG.COM.AU