

# FELTES

## Feltes aluminium lifting gantry

Feltes portable aluminium gantries are ideal for applications where no permanent lifting device is present or the lifting works need to be conducted in an area with restricted space.

Portable lifting gantries have numerous applications in many industries including:

- HVAC
- Plumbing
- Lift and elevators
- Entertainment
- Shop fitters
- Fire protection
- Commercial construction
- Maritime engineering

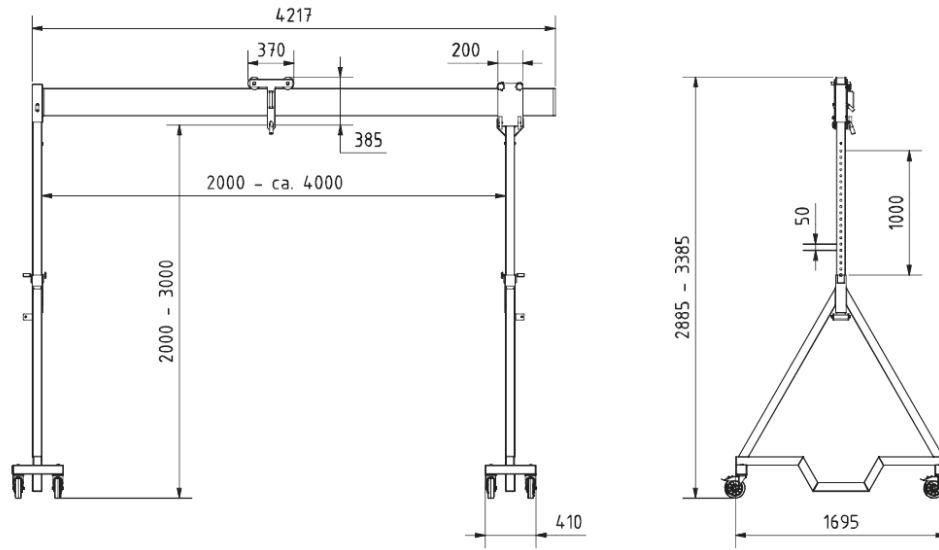
Feltes gantries are available **for hire** in three variants and optional length beams that can be used with one or two girder trollies so we can meet your job specific requirement and can offer manual chain blocks, air or electric chain hoists.

- Mobile - rated to 1,000kg WLL with the end frames on castors to allow movement under load.
- Static - rated to 1,500kg WLL with some height adjustment in the stands.
- Folding - rated to 1,500kg WLL, like the static but the end frames fold up to make transportation and installation in confined spaces easier.
- Beams are available in the following lengths:
  - 2.0m
  - 3.0m
  - 4.0m
  - 5.0m



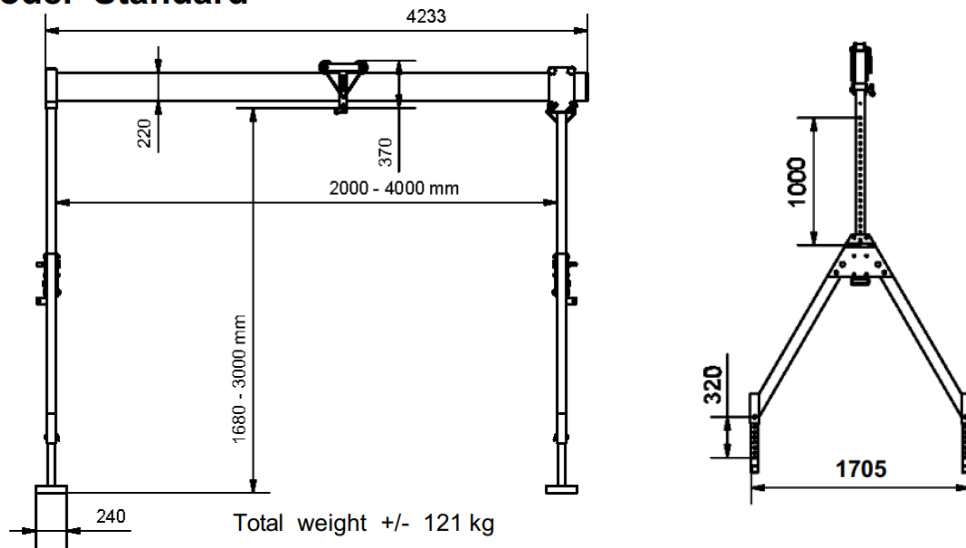
Movable

**Model Standard**  
Item no.: 122001



Static

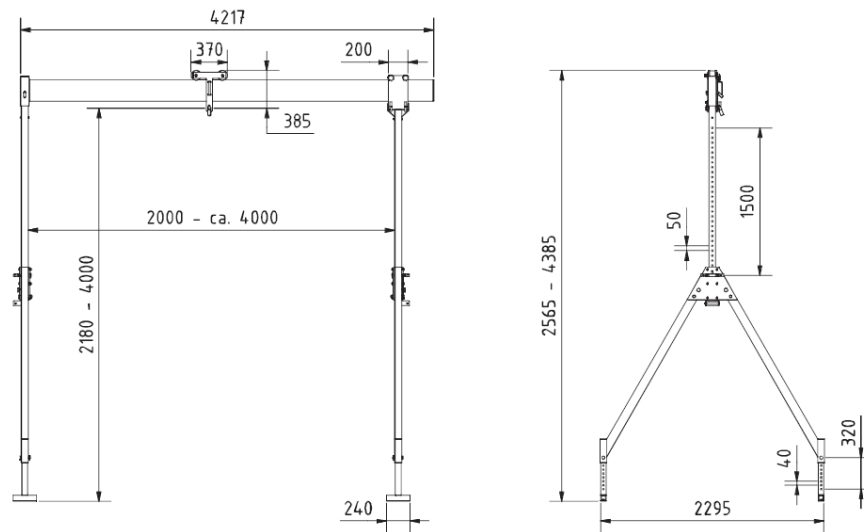
**Model Standard**



Total weight +/- 121 kg

Folding

**Model Maxi**  
Item no.: 113001



Please note that all gantry types can be supplied with beams 2m, 3m, 4m & 5m