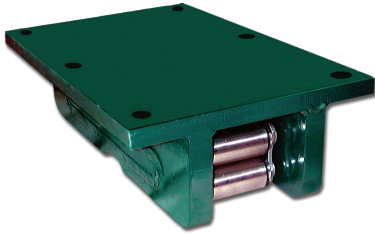


OT • NT • T

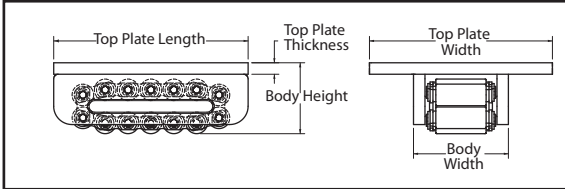
Dimensions



OT

Capacity Metric Tons	<<<<<Body Dimensions>>>>>			<<<<Top Plate Dimensions>>>>			<<<<Footprint>>>>			Weight lbs.(kgs)
	Length	Height*	Width	Thickness	Width	Length	Contact Rolls	Roll Dia.	Roll Width	
	<<<<<Inches (mm)>>>>>			<<<<<Inches (mm)>>>>			<<<<Inches (mm)>>>>			
.75-OT .75-ton	6.5 (165)	3.125 (79)	3.625 (92)	.375 (10)	7.0 (178)	6.5 (165)	5	.8125 (17)	2 (51)	13 (6)
1-OT 1-ton	6.0 (152)	2.375 (60)	3.5625 (91)	.375 (10)	6.0 (152)	6.0 (152)	5	.8125 (17)	2 (51)	11 (5)
2.5-OT 2.5-tons	6.5 (165)	3.625 (92)	4.125 (105)	.375 (10)	7.0 (178)	6.5 (165)	4	.9375 (24)	2.4375 (62)	19 (9)
5-OT 5-tons	8.0 (203)	3.125 (79)	4.5625 (116)	.375 (10)	8.0 (203)	8.0 (203)	5	.9375 (24)	2.3125 (62)	22 (10)
8-OT 8-tons	8.0 (203)	3.125 (79)	5.3125 (135)	.375 (10)	8.0 (203)	8.0 (203)	5	.9375 (24)	3.3125 (84)	24 (11)
15-OT 15-tons	10.625 (270)	3.875 (98)	5.3125 (135)	.625 (16)	10.0 (254)	10.625 (270)	5	1.1875 (30)	2.75 (70)	47 (21)
20-OT 20-tons	10.625 (270)	3.875 (98)	6.5625 (167)	.625 (16)	10.0 (254)	10.625 (270)	5	1.1875 (30)	4 (102)	54 (24)
37.5-OT 37.5-tons	15.0 (381)	5.5 (140)	7.25 (184)	.75 (19)	12.0 (305)	15.0 (381)	5	1.625 (41)	3.5 (89)	119 (54)
50-OT 50-tons	18.5 (470)	5.5 (140)	7.25 (184)	.75 (19)	12.0 (305)	18.5 (470)	7	1.625 (41)	3.5 (89)	153 (69)
75-OT 75-tons	21.0 (533)	6.75 (171)	7.375 (187)	1.00 (25)	14.0 (356)	21.0 (533)	7	1.9375 (49)	3.625 (92)	235 (107)

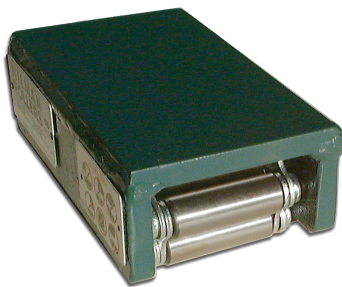
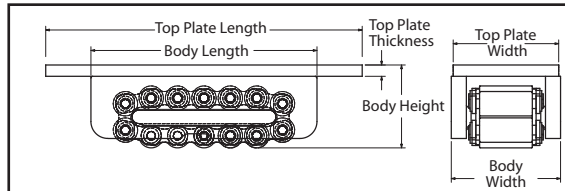
* Height includes Top Plate Thickness



NT

Capacity Metric Tons	<<<<<Body Dimensions>>>>>			<<<<Top Plate Dimensions>>>>			<<<<Footprint>>>>			Weight lbs.(kgs)
	Length	Height*	Width	Thickness	Width	Length	Contact Rolls	Roll Dia.	Roll Width	
	<<<<<Inches (mm)>>>>>			<<<<<Inches (mm)>>>>			<<<<Inches (mm)>>>>			
.75-NT .75-ton	6.5 (165)	3.125 (79)	3.625 (92)	.375 (10)	3.5 (89)	8.0 (203)	5	.8125 (17)	2.0 (51)	11 (5)
1-NT 1-ton	6.0 (152)	2.375 (60)	3.5625 (91)	.375 (10)	3.5 (89)	8.0 (203)	5	.8125 (17)	2.0 (51)	10 (5)
2.5-NT 2.5-tons	6.5 (165)	3.625 (92)	4.125 (105)	.375 (10)	4.0 (102)	9.5 (241)	4	.9375 (24)	2.4375 (62)	19 (9)
5-NT 5-tons	8.0 (203)	3.125 (79)	4.5625 (116)	.375 (10)	4.5 (114)	11.75 (298)	5	.9375 (24)	2.4375 (62)	20 (9)
8-NT 8-tons	8.0 (203)	3.125 (79)	5.3125 (135)	.375 (10)	5.0 (127)	11.75 (298)	5	.9375 (24)	3.3125 (84)	24 (11)
15-NT 15-tons	10.625 (270)	3.875 (98)	5.3125 (135)	.625 (16)	5.0 (127)	14.75 (375)	5	1.1875 (30)	2.75 (70)	41 (19)
20-NT 20-tons	10.625 (270)	3.875 (98)	6.5625 (167)	.625 (16)	6.5 (165)	14.75 (375)	5	1.1875 (30)	4.0 (102)	52 (24)
37.5-NT 37.5-tons	15.0 (381)	5.5 (140)	7.25 (184)	.75 (19)	7.0 (178)	21.0 (533)	5	1.625 (41)	3.5 (89)	112 (51)
50-NT 50-tons	18.5 (470)	5.5 (140)	7.25 (184)	.75 (19)	7.0 (178)	22.5 (572)	7	1.625 (41)	3.5 (89)	140 (64)
75-NT 75-tons	21.0 (533)	6.75 (171)	7.375 (187)	1.00 (25)	7.5 (191)	27.0 (686)	7	1.9375 (49)	3.625 (92)	210 (95)

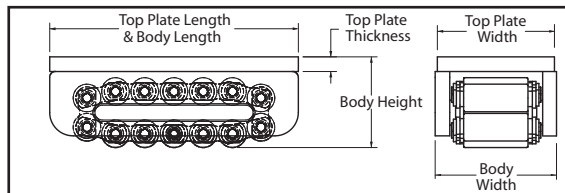
* Height includes Top Plate Thickness



T

Capacity Metric Tons	<<<<<Body Dimensions>>>>>			<<<<Top Plate Dimensions>>>>			<<<<Footprint>>>>			Weight lbs.(kgs)
	Length	Height*	Width	Thickness	Width	Length	Contact Rolls	Roll Dia.	Roll Width	
	<<<<<Inches (mm)>>>>>			<<<<<Inches (mm)>>>>			<<<<Inches (mm)>>>>			
.75-T .75-ton	6.5 (165)	3.125 (79)	3.625 (92)	.375 (10)	3.5 (89)	6.5 (165)	5	.8125 (17)	2.0 (51)	11 (5)
1-T 1-ton	6.0 (152)	2.375 (60)	3.5625 (91)	.375 (10)	3.5 (89)	6.0 (152)	5	.8125 (17)	2.0 (51)	9 (4)
2.5-T 2.5-tons	6.5 (165)	3.625 (92)	4.125 (105)	.375 (10)	4.0 (102)	6.5 (165)	4	.9375 (24)	2.4375 (62)	17 (8)
5-T 5-tons	8.0 (203)	3.125 (79)	4.5625 (116)	.375 (10)	4.5 (114)	8.0 (203)	5	.9375 (24)	2.4375 (62)	19 (9)
8-T 8-tons	8.0 (203)	3.125 (79)	5.3125 (135)	.375 (10)	5.0 (127)	8.0 (203)	5	.9375 (24)	3.3125 (84)	22 (10)
15-T 15-tons	10.625 (270)	3.875 (98)	5.3125 (135)	.625 (16)	5.0 (127)	10.625 (270)	5	1.1875 (30)	2.75 (70)	38 (17)
20-T 20-tons	10.625 (270)	3.875 (98)	6.5625 (167)	.625 (16)	6.5 (165)	10.625 (270)	5	1.1875 (30)	4.0 (102)	47 (21)
37.5-T 37.5-tons	15.0 (381)	5.5 (140)	7.25 (184)	.75 (19)	7.0 (178)	15.0 (381)	5	1.625 (41)	3.5 (89)	103 (47)
50-T 50-tons	18.5 (470)	5.5 (140)	7.25 (184)	.75 (19)	7.0 (178)	18.5 (470)	7	1.625 (41)	3.5 (89)	134 (61)
75-T 75-tons	21.0 (533)	6.75 (171)	7.375 (187)	1.00 (25)	7.5 (191)	21.0 (533)	7	1.9375 (49)	3.625 (92)	198 (90)

* Height includes Top Plate Thickness



Dynamic Rigging Hire stock eight of the 75-NT skates for rental. Call our office for further information and pricing (03) 8360 8910