

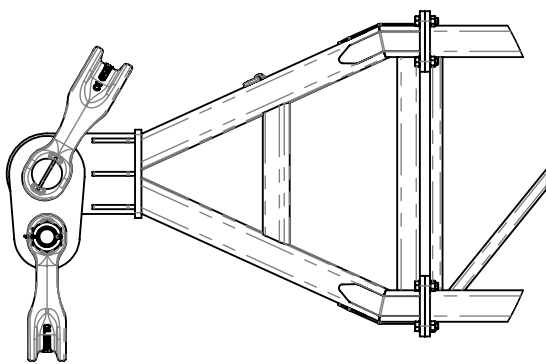
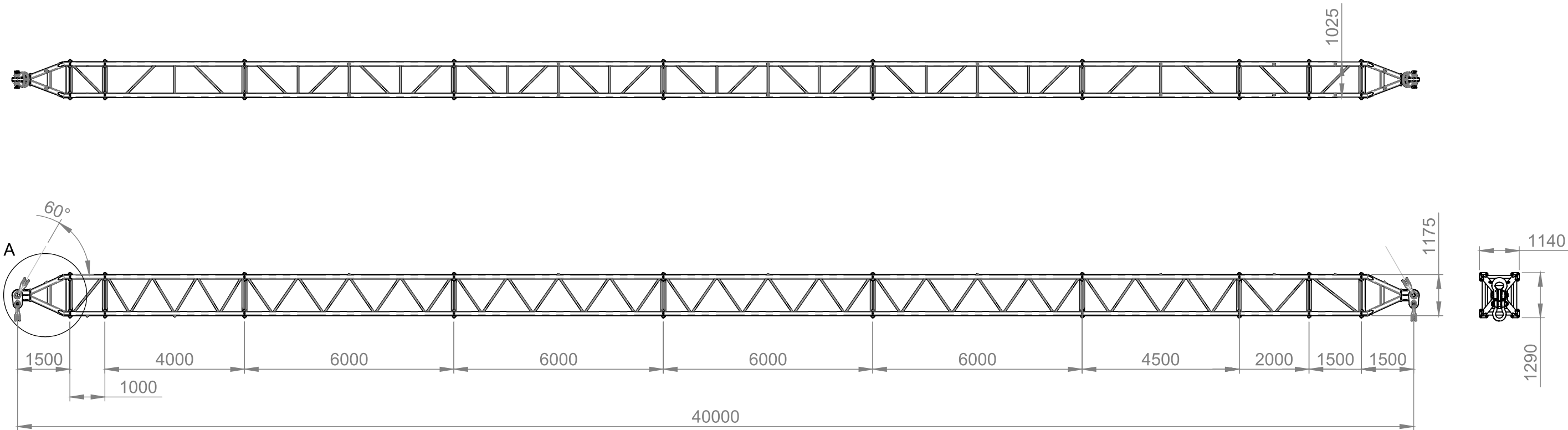


Supplied with:

- Certification to AS4991-2004
- Secondary design certificate
- MPI welding report
- All welding to AS1554.1 SP
- Anodized aluminium compliance plate
- 2 pack painted finish (G26 Apple Green or Y14 Golden Yellow)
- Australian Designed & Manufactured

MAX WLL 240t (at 60° included sling angle)

Refer to load chart on page 2  
Lifting lugs suit 150t sling saver shackle  
Load lugs suit 125t sling saver shackle  
Approx TARE 7.800t



DETAIL A



SKETCH NUMBER: SK15342

REVISION: A

DRAWN BY: TK-1

CONCEPT SKETCH ONLY - DO NOT SCALE  
FINAL DRAWING TO BE PROVIDED FOR  
REVIEW & APPROVAL PRIOR TO  
MANUFACTURE

THIS SKETCH AND THE INFORMATION ON IT REMAINS  
THE PROPERTY OF MAXIRIG.  
WRITTEN PERMISSION MUST BE OBTAINED FROM  
MAXIRIG TO COPY OR REPRODUCE THE WHOLE OR  
PART OF THIS DRAWING.

Span (m)	WLL (t)		APPROX. SLING LENGTH (m)		APPROX. HEADROOM (m)		COMBINATIONS							APPROX TARE (t)
	60° ISA	90° ISA	60° ISA	90° ISA	60° ISA	90° ISA	End Unit	1	1.5	2	4	4.5	6	
3	240	200	3.000	2.122	2.598	1.500	2							0.93
3.5	NOT AVAILABLE													
4	240	200	4.000	2.829	3.464	2.000	2	1						1.20
4.5	240	200	4.500	3.182	3.897	2.250	2		1					1.26
5	240	200	5.000	3.536	4.330	2.500	2			1				1.34
5.5	240	200	5.500	3.890	4.763	2.750	2	1	1					1.53
6	240	200	6.000	4.243	5.196	3.000	2	1		1				1.60
6.5	240	200	6.500	4.597	5.629	3.250	2		1	1				1.67
7	240	200	7.000	4.950	6.062	3.500	2				1			1.67
7.5	240	200	7.500	5.304	6.495	3.750	2					1		1.73
8	240	200	8.000	5.658	6.928	4.000	2	1			1			1.94
8.5	240	200	8.500	6.011	7.361	4.250	2		1		1			2.00
9	240	200	9.000	6.365	7.794	4.500	2						1	2.00
9.5	240	200	9.500	6.719	8.227	4.750	2			1		1		2.13
10	240	200	10.000	7.072	8.660	5.000	2	1					1	2.26
10.5	240	200	10.500	7.426	9.093	5.250	2		1				1	2.32
11	240	200	11.000	7.779	9.526	5.500	2			1			1	2.40
11.5	240	200	11.500	8.133	9.959	5.750	2	1	1				1	2.59
12	240	200	12.000	8.487	10.392	6.000	2	1		1			1	2.67
12.5	240	200	12.500	8.840	10.825	6.250	2		1	1			1	2.73
13	240	200	13.000	9.194	11.258	6.500	2				1		1	2.73
13.5	240	200	13.500	9.547	11.691	6.750	2					1	1	2.79
14	240	200	14.000	9.901	12.124	7.000	2	1			1		1	3.00
14.5	240	200	14.500	10.255	12.557	7.250	2		1		1		1	3.06
15	240	200	15.000	10.608	12.990	7.500	2						2	3.06
15.5	240	200	15.500	10.962	13.423	7.750	2			1		1	1	3.20
16	240	200	16.000	11.315	13.856	8.000	2	1					2	3.32
16.5	240	200	16.500	11.669	14.289	8.250	2		1				2	3.38
17	240	200	17.000	12.023	14.722	8.500	2			1			2	3.45
17.5	240	200	17.500	12.376	15.155	8.750	2	1	1				2	3.65
18	240	200	18.000	12.730	15.588	9.000	2	1		1			2	3.73
18.5	240	200	18.500	13.083	16.021	9.250	2		1	1			2	3.78
19	240	200	19.000	13.437	16.454	9.500	2				1		2	3.78
19.5	240	200	19.500	13.791	16.888	9.750	2					1	2	3.85
20	240	200	20.000	14.144	17.321	10.000	2	1			1		2	4.05
20.5	240	200	20.500	14.498	17.754	10.250	2		1		1		2	4.11
21	240	200	21.000	14.851	18.187	10.500	2						3	4.11
21.5	240	200	21.500	15.205	18.620	10.750	2			1		1	2	4.25
22	240	200	22.000	15.559	19.053	11.000	2	1					3	4.38
22.5	240	200	22.500	15.912	19.486	11.250	2		1				3	4.44
23	240	200	23.000	16.266	19.919	11.500	2			1			3	4.52
23.5	240	200	23.500	16.620	20.352	11.750	2	1	1				3	4.71
24	240	200	24.000	16.973	20.785	12.000	2	1		1			3	4.78
24.5	240	200	24.500	17.327	21.218	12.250	2		1	1			3	4.85
25	240	200	25.000	17.680	21.651	12.500	2				1		3	4.85
25.5	240	200	25.500	18.034	22.084	12.750	2					1	3	4.91
26	240	200	26.000	18.388	22.517	13.000	2	1			1		3	5.12
26.5	240	200	26.500	18.741	22.950	13.250	2		1		1		3	5.18
27	240	200	27.000	19.095	23.383	13.500	2						4	5.18
27.5	240	200	27.500	19.448	23.816	13.750	2			1		1	3	5.32
28	240	200	28.000	19.802	24.249	14.000	2	1					4	5.44
28.5	240	200	28.500	20.156	24.682	14.250	2		1				4	5.50
29	240	200	29.000	20.509	25.115	14.500	2			1			4	5.58
29.5	240	200	29.500	20.863	25.548	14.750	2	1	1				4	5.77
30	240	200	30.000	21.216	25.981	15.000	2	1		1			4	5.85
30.5	230	190	30.500	21.570	26.414	15.250	2		1	1			4	5.90
31	225	185	31.000	21.924	26.847	15.500	2				1		4	5.90
31.5	215	175	31.500	22.277	27.280	15.750	2					1	4	5.97
32	210	170	32.000	22.631	27.713	16.000	2	1			1		4	6.18
32.5	190	160	32.500	22.984	28.146	16.250	2		1		1		4	6.24
33	180	155	33.000	23.338	28.579	16.500	2			1	1		4	6.31
33.5	175	145	33.500	23.692	29.012	16.750	2			1		1	4	6.38
34	170	140	34.000	24.045	29.445	17.000	2	1	1			1	4	6.57
34.5	160	130	34.500	24.399	29.878	17.250	2	1		1		1	4	6.65
35	150	125	35.000	24.752	30.311	17.500	2		1	1		1	4	6.70
35.5	145	115	35.500	25.106	30.744	17.750	2				1	1	4	6.70
36	140	110	36.000	25.460	31.177	18.000	2	1	1	1		1	4	6.78
36.5	130	100	36.500	25.813	31.610	18.250	2	1			1	1	4	6.98
37	125	95	37.000	26.167	32.043	18.500	2		1		1	1	4	7.04
37.5	120	85	37.500	26.521	32.476	18.750	2			1	1	1	4	7.11
38	120	80	38.000	26.874	32.909	19.000	2	1	1		1	1	4	7.31
38.5	115	70	38.500	27.228	33.342	19.250	2	1		1	1	1	4	7.38
39	110	65	39.000	27.581	33.775	19.500	2		1	1	1	1	4	7.44
39.5	NOT AVAILABLE													
40	100	50	40.000	28.289	34.641	20.000	2	1	1	1	1	1	4	7.71